

WEST YORKSHIRE SPINNERS

OUT OF THE  
*Woods*

DELILAH DIAMOND FAIR ISLE YOKE JUMPER  
BY EMMA WRIGHT

**DESIGNS:** Emma Wright

**COPYRIGHT:** The knitwear designs in this pattern are copyrighted and must not be knitted for resale.

Reproduction of this pattern is protected by copyright and sold on the condition that it is used for non-commercial purposes. No part of this pattern may be reproduced for resale.

WEST  
YORKSHIRE  
SPINNERS





< >

# OUT OF THE *Woods*

'Out Of The Woods' is a collection of designs which combines the solid & natural shades of the Illustrious colour palette; inspired by a nostalgic craving for those intuitive outdoor explorations into nature.



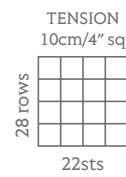
# ILLUSTRIOUS

70% FALKLAND WOOL 30% BRITISH ALPACA

Illustrious is a blend of pure, unadulterated Falkland Islands wool with the finest British Alpaca. Falkland wool is the perfect companion to the UK reared Alpaca. The increased length of the fibre envelopes or wraps round the Alpaca, preventing an abundance of surface fibre and hairiness.

The colours in this range were selected to inspire and excite. We invested our time ensuring that the shades not only worked well individually but also in harmony with each other. Finally, we used our technology to create subtle, variegated combinations which complete this stunning collection.

70% FALKLAND WOOL  
30% BRITISH ALPACA



100G  
BALL

225  
METRES

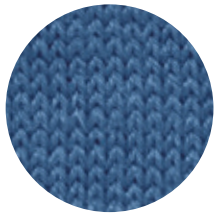
245  
YARDS



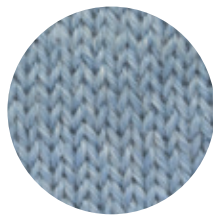
Do not tumble dry  
Reshape whilst damp



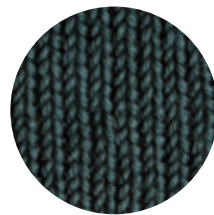
Mulberry  
765



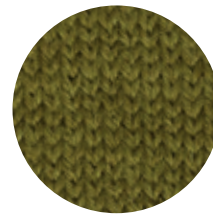
Royal  
174



Ocean  
807



Highland  
331



Fern  
344



Antique Gold  
203



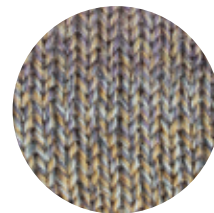
Claret  
508



Garnet  
594



Heather  
828



Lichen  
826



Old Lace  
010

# ILLUSTRIOUS

70% FALKLAND WOOL 30% BRITISH ALPACA

## NATURALS

A collection of six completely natural shades combining pure unadulterated Falkland Island wool with the finest British Alpaca. This stunning colour palette was achieved by using the beautiful natural tones of British Alpaca fleece.

70% FALKLAND WOOL  
30% BRITISH ALPACA

TENSION  
10cm/4" sq  
28 rows  
22sts

4mm  
US6

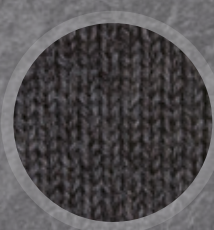
225  
METRES

100G  
BALL

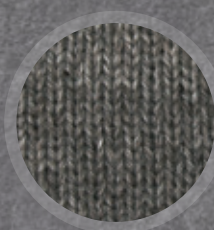
245  
YARDS



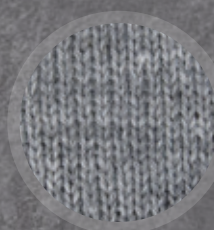
Do not tumble dry  
Reshape whilst damp



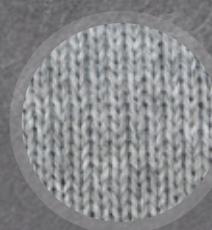
Graphite  
037



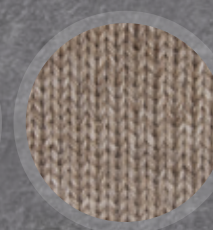
Pewter  
838



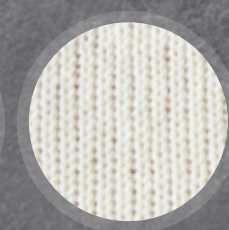
Slate  
036



Pebble  
034



Shale  
035



Old Lace  
010



# Emma Wright

Emma Wrights AW18-19 collection of designs combine the new rich jewel like shades with the existing range of solid & natural colours. Cable textures, peplum shaping, basic & complex colour-work pieces create a fashionable collection of everyday luxury knitwear. Out of the Woods is a concept that developed from the colour palette and was influenced by a nostalgic craving for those intuitive outdoor explorations into nature. Venture into your creativity with this collection of 4 alluring garments & 3 beautiful accessory sets.

## GENERAL INFO

### TENSION

It is essential to work to the stated tension in order to achieve the desired fabric and garment size, you should always start by knitting a tension square before knitting the full garment.

If you have fewer stitches than stated you will need to go down needle sizes until the correct tension is achieved and if you have more you will need to go up needle sizes. Please check individual patterns for tension before starting the garment.

### WORKING FROM A CHART

When working from a chart you will read all right side rows from right to left and wrong side rows from left to right.

### FINISHING

We recommend using mattress stitch for seaming your garment. When sewing in a raglan sleeve you will match row for row. When sewing in a semi set in sleeve you need to pin the sleeve in position matching the centre of the sleeve cast off to the shoulder of the body, you will then ease the sleeve into the armhole.

Once your garment is completed it is essential to block your knitting. Pin your garment out to the size stated in the pattern. Cover with damp cloths and leave until dry.

## WASHING INSTRUCTIONS



Do not tumble dry  
Reshape whilst damp

## ABBREVIATIONS

<b>alt</b>	alternate
<b>beg</b>	beginning
<b>cm</b>	centimetres
<b>cont</b>	continue
<b>dec</b>	decrease(ing)
<b>foll</b>	follow(ing)
<b>folls</b>	follows
<b>g-st</b>	garter stitch (every row knit)
<b>g</b>	grammes
<b>in</b>	inch(es)
<b>Kbf</b>	knit into back and front
<b>K</b>	knit
<b>K2tog</b>	knit 2 sts together
<b>K3tog</b>	knit 3 sts together
<b>mm</b>	millimetres
<b>patt</b>	pattern
<b>patt2tog</b>	Pattern 2 sts together
<b>patt2togtbl</b>	pattern 2 sts together through back of loop
<b>P</b>	purl
<b>P2tog</b>	purl 2 sts together
<b>pssso</b>	pass slipped stitch over
<b>rep</b>	repeat
<b>rem</b>	remain(ing)
<b>rs</b>	right side
<b>st(s)</b>	stitch(es)
<b>sl1</b>	slip 1 stitch
<b>sl2p</b>	Slip 2 sts purl-wise
<b>st-st</b>	stocking stitch (1 row knit, 1 row purl)
<b>tbl</b>	through back of loop
<b>tog</b>	together
<b>ws</b>	wrong side
<b>yb</b>	yarn back
<b>yfwd</b>	yarn forward
<b>yrn</b>	yarn round needle



OPTION A



# Delilah

SKILL LEVEL



## DIAMOND FAIR-ISLE YOKE JUMPER

### MEASUREMENTS

#### To Fit Bust

in	32/34	36/38	40/42	44/46	48/50
cm	81/86	91/97	102/107	112/117	122/127

#### Actual Size

cm	104	115	125	136	147
----	-----	-----	-----	-----	-----

#### Full Length (option A)

cm	55	59	63	66	71
----	----	----	----	----	----

#### (option B)

cm	53	59	65	66	71
----	----	----	----	----	----

#### Sleeve Length

cm	46	46	47	48	48
----	----	----	----	----	----

Model wears first size (to fit bust 81/86 cm)

### MATERIALS

#### YARN

##### Option A

West Yorkshire Spinners - Illustrious Naturals DK

A	Graphite (037)	4[5:5:6:6] x 100g hanks
B	Shale (035)	1[1:1:1:2] x 100g hank
C	Pewter (838)	1[1:1:2:2] x 100g hank

##### Option B

West Yorkshire Spinners - Illustrious DK

A	Highland (331)	4[5:5:6:6] x 100g balls
B	Old Lace (010)	1[1:1:1:2] x 100g ball
C	Sea Glass (303)	1[1:1:1:2] x 100g ball

### NEEDLES

1 Pair 4mm (US 6/UK 8) knitting needles

4mm (US 6/UK 8) Circular needle

3.5mm (US 4) Circular needles

4 Large stitch holders

4 Stitch markers

### TENSION

22 sts and 28 rows to 10cm measured over stocking stitch on 4mm needles or size needed to achieve tension. It is important to follow the blocking instructions given below.

PLEASE CHECK YOUR TENSION AS IT IS ESSENTIAL TO ACHIEVE THIS TENSION IN ORDER TO ACHIEVE SUCCESS.

### SPECIAL NOTES

Due to the larger diamond in option B less length is worked before yoke is joined into round to create a bigger armhole.

### CHART

When working from a chart you will read all rnds from right to left.

### FAIR ISLE

When working in more than 1 colour, the colour not in use should be stranded loosely across back of work and woven in where necessary to retain elasticity of fabric.



## BACK AND FRONT (BOTH ALIKE)

Using 4mm needles and A, cast on 114 [126:138:150:162] sts.

**Row 1 (RS):** K2, \* p2, k2, rep from \* to end.

**Row 2:** P2, \* K2, p2, rep from \* to end.

These 2 rows form rib.

Cont in rib until work measures 5cm, ending with RS facing for next row.

### OPTION A

Cont in st-st until work measures 34 [35:36:36:38] cm, ending with RS facing for next row.

### OPTION B

Cont in st-st until work measure 27 [30:33:31:33] cm, ending with RS facing for next row. (See pattern note)

### BOTH OPTIONS

#### Shape Armholes

Cast off 8 [7: 8:9:11] sts at beg of next 2 rows.  
98 [112:122:132:140] sts.

Leave these 98 [112:122:132:140] sts on a holder for yoke.

## SLEEVES (BOTH ALIKE)

Using 3.5mm needles and A, cast on 46 [46:50:50:54] sts.

Work in rib as set on Back until work measures 5cm, ending with RS facing for next row.

Change to 4mm needles and work in st-st (throughout) inc 1 st at each end of the 3rd and every foll 9th [8th:7th:6th:5th] row to 70 [72:80:88:100] sts.

Cont without shaping until sleeve measures 46 [46:47:48:48] cm, ending with RS facing for next row.

#### Shape Sleeve Top

Cast off 8 [7:8:9:11] sts at beg of next 2 rows.  
54 [58:64:70:78] sts.

Leave these 54 [58:64:70:78] sts on a holder for yoke.

## YOKE

Using 4mm circular knitting needle and A, (place beg/end marker [marker 1]) knit 54 [58:64:70:78] sts across first sleeve, place marker 2, knit 98 [112:122:132:140] sts across front, place marker 3, knit 54 [58:64:70:78] sts across second sleeve, place marker 4, knit 98 [112:122:132:140] sts across back. 304 [340:372:404:436] sts

Working in rnds only proceed as follows:-

#### For 1st Size only

**Next rnd:** Knit to end, slipping markers.

#### For 2nd, 3rd, 4th and 5th Sizes only

**Next rnd:** K [58:64:70:78] sts to marker 2, slip marker, k1, sl1, k1, pssso, k [106:116:126:134] sts, k2tog, k1, slip marker 3, k [58:64:70:78] sts to marker 4, slip marker, k1, sl1, k1, pssso, k [106:116:126:134] sts, k2tog, k1. [336:368:400:432] sts.

#### For all sizes

**Next rnd:** Knit to end, slipping markers.

## OPTION A

### SEE OPTION A CHART A

**Note:** Keeping stitch markers in place throughout chart A proceed as follows:-

**Rnd 1:** \* K3A, k2B, k3A, rep from \* to end.

**Rnd 2:** \* K2A, k4B, k2A, rep from \* to end.

Cont as set until all 7 rnds of chart are completed.

Break off A and B, work in C only.

Working yoke decreases as follows:-

**Yoke rnd 1:** K1, sl1, k1, pssso, knit to 3sts before next marker, k2tog, k1, slip marker 2, k1, sl1, k1, pssso, knit to 3sts before next marker, k2tog, k1, slip marker 3, k1, sl1, k1, pssso, knit to 3sts before next marker, k2tog, k1, slip marker 4, k1, sl1, k1, pssso, knit to 3sts before next marker, k2tog, k1. 296 [328:360:392:424] sts.

**Yoke rnd 2:** Knit to end, slipping markers.

These 2 rnds set yoke decs.

Rep these 2 rnds 16 [17:19:22:25] times more.

168 [192:208:216:224] sts.

### SEE OPTION A CHART B

**Note:** Keeping stitch markers in place throughout chart B proceed as follows:-

**Rnd 1:** \* K3C, k2A, k3C, rep from \* to end.

**Rnd 2:** \* K2C, k4A, k2C, rep from \* to end.

Cont as set until all 7 rnds of chart are completed.

Break off A and C, work only in B.

**Next rnd:** Knit to end, slipping markers.

Rep yoke decrease rnds 1 and 2, 3 [6:8:9:10] times more.  
144 sts.

Back and front sts are 58 [62:64:66:66] sts sleeves have 14 [10:8:6:6] sts.

**Next rnd:** K to marker 2, slip marker, k0 [2:3:4:4], (sl2, k1, pssso, k3) 9 times, sl2, k1, pssso, k1 [3:4:5:5], slip marker, k to marker 4, slip marker, k0 [2:3:4:4], (sl2, k1, pssso, k3) 9 times, sl2, k1, pssso, k1 [3:4:5:5]. 104 sts. Keep 1st stitch marker in place and remove 3 rem stitch markers.

**Next rnd:** Knit.

Change to 3.5mm circular needle and work in rib as follows:-

**Rib rnd:** \* K2, p2, rep from \* to end.

This rnd forms rib.

Cont until rib measures 5cm or desired length.

Cast off in rib.

## OPTION B

### SEE OPTION B CHART A

**Note:** Keeping stitch markers in place throughout chart A proceed as follows:-

**Rnd 1:** \* K7A, k2B, k7A, rep from \* to end.

**Rnd 2:** \* K6A, k4B, k6A, rep from \* to end.

Cont as set until all 15 rnds of chart are completed.

Break off A and B, work only in C.

Working yoke decreases as follows:-

**Yoke rnd 1:** K1, sl1, k1, pssso, knit to 3sts before next marker, k2tog, k1, slip marker 2, k1, sl1, k1, pssso, knit to 3sts before next marker, k2tog, k1, slip marker 3, k1, sl1, k1, pssso, knit to 3sts before next marker, k2tog, k1, slip marker 4, k1, sl1, k1, pssso, knit to 3sts before next marker, k2tog, k1. 296 [328:360:392:424] sts.

**Yoke rnd 2:** Knit to end, slipping markers.

These 2 rnds set yoke decs.

Rep these 2 rnds 13 [15:15:19:23] times more.

192 [208:240:240:240] sts.

### SEE OPTION B CHART B

**Note:** Keeping stitch markers in place throughout chart B proceed as follows:-

**Rnd 1:** \* K7C, k2A, k7C, rep from \* to end.

**Rnd 2:** \* K6C, k4A, k6C, rep from \* to end.

Cont as set until all 15 rnds of chart are completed.

Break of A and C, work only in B.

**Next rnd:** Knit to end, slipping markers.

Rep yoke decrease rnds 1 and 2

4 [6:10:10:10] times more. 160 sts.

Keep 1st stitch marker in place and remove 3 rem stitch markers.

**Next rnd:** \* K3, sl1, k2tog, pssso, rep from \* to last 4 sts, k1, sl1, k2tog, pssso. 106 sts.

**Next rnd:** K25, k2tog, k52, k2tog, k25. 104 sts.

Change to 3.5mm circular needle and work in rib as follows:-

**Rib Rnd:** \* K2, p2, rep from \* to end.

This rnd forms rib.

Cont until rib measures 5 cm or desired length.

Cast off in rib.

## MAKING UP

Join underarm seams. Join side and sleeve seams.

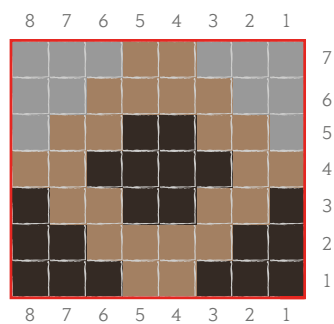
### BLOCKING

Pin to measurements stated above, cover with damp cloths and leave to dry.

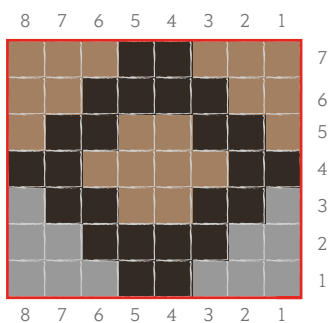


OPTION A

## OPTION A CHART A



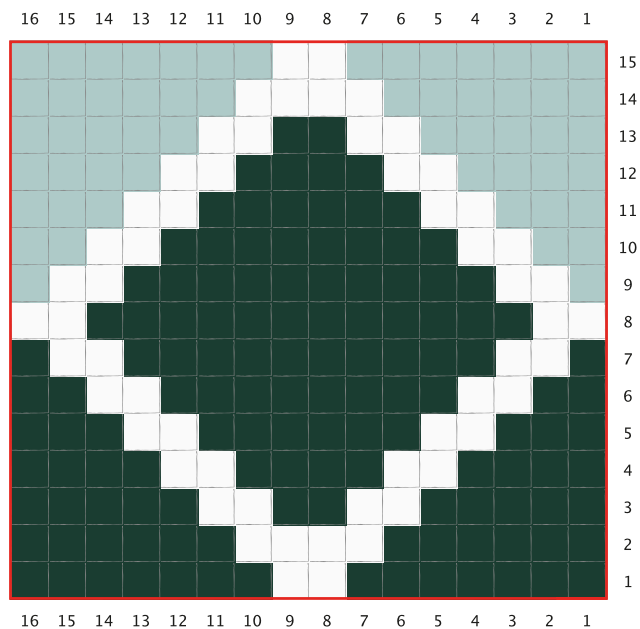
## OPTION A CHART B



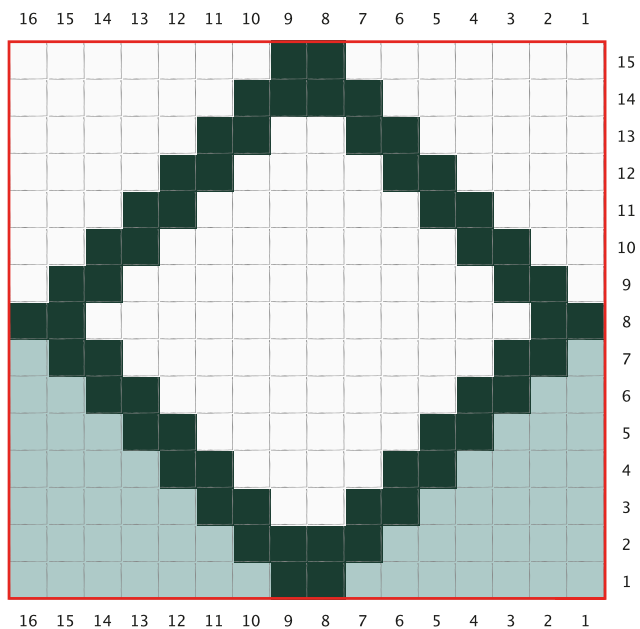
## OPTION A KEY

-  Every rnd: Knit
-  A Graphite (037)
-  B Shale (035)
-  C Pewter (838)
-  8 st patt rep

## OPTION B CHART A



## OPTION B CHART B



## OPTION B KEY

-  Every rnd: Knit
-  A Highland (331)
-  B Old Lace (010)
-  C Seaglass (303)
-  16 st patt rep



OPTION B

## DISCLAIMER

---

Please note that all quantities in this pattern are based on average usage and therefore are approximate. We cannot accept responsibility for the finished garment if any other yarn than the one specified is used.

Although every effort has been made to ensure that instructions are correct, West Yorkshire Spinners cannot accept any liabilities. Owing to photography and printing restrictions the colour reproduction is matched as closely as possible to the yarn.

## CONTACT INFORMATION

---

West Yorkshire Spinners  
Unit 2, Airedale Park, Royd Ings Avenue,  
Keighley, West Yorkshire BD21 4DG

[www.wyspinners.com](http://www.wyspinners.com)  
(0)1535 664500  
[sales@wyspinners.com](mailto:sales@wyspinners.com)

WWW.WYSPINNERS.COM

# WEST YORKSHIRE SPINNERS

DBP0132 / WYS98106



Join our Facebook community

 WYS Crafter's Hub

UNIT 2, AIREDALE PARK, ROYD INGS AVENUE, KEIGHLEY, WEST YORKSHIRE BD21 4DG  
**(0)1535 664500 SALES@WYSPINNERS.COM WYSPINNERS.COM**